

Non-compulsory measures sufficiently reduced human mobility in Tokyo during the COVID-19 epidemic

Takahiro Yabe, Kota Tsubouchi, Naoya Fujiwara, Takayuki Wada, Yoshihide Sekimoto & Satish V. Ukkusuri

Citation	Scientific Reports. 10; 18053
Published	2020-10-22
Type	Journal Article
Textversion	Author
Supplementary information	Supplementary information is available at https://doi.org/10.1038/s41598-020-75033-5 .
Right	© 2020 Authors. This article is licensed under a Creative Commons Attribution 4.0 International License. To view a copy of this licence, visit http://creativecommons.org/licenses/by/4.0/ .
DOI	10.1038/s41598-020-75033-5
本研究のポイント	<ul style="list-style-type: none">・携帯電話の位置情報を用いて、コロナ禍での緊急事態宣言発令前後(2020年1月～4月中旬)での人々の行動変容について解析・東京都内で接触減少率に地域差があったことや、接触減少率と COVID-19 の実効再生産数との非線形な関係性が明らかに・どの程度人々の接触を抑制するべきかについての定量的なエビデンスを示した点に意義があり、今後さらなる感染拡大も予想される中、今後の政策決定に大きく貢献するものと期待される

Self-Archiving by Author(s)
Placed on: Osaka City University Repository

Yabe, T., Tsubouchi, K., Fujiwara, N. et al. Non-compulsory measures sufficiently reduced human mobility in Tokyo during the COVID-19 epidemic. *Scientific Reports*. 10, 18053 (2020). doi:10.1038/s41598-020-75033-5

<p>概 要</p>	<p>研究グループは、携帯電話の位置情報を用いて東京におけるコロナ禍の外出自粛や緊急事態宣言の効果を検証しました。</p> <p>本手法は、携帯電話の位置情報(GPS 情報)から取得される大量の移動軌跡を解析することで、都市において人々がいつ、どこで、どの程度接触しているかを定量化できるものです。</p> <p>解析の結果、緊急事態宣言が発令される前の3月初週時点で人々の自宅外での接触率は平時の6割程度に減少し、緊急事態宣言を発令したことで、4月中旬での接触率は平時の2割程度まで抑えられていたことが示されました。さらには、接触の減少率と COVID-19 の実効再生産数との非線形な関係性も明らかにされ、今後さらなる感染拡大も予想される中、どの程度人々の接触を抑制するべきかについての定量的なエビデンスが示されました。</p>
<p>Description</p>	<p><背景></p> <p>COVID-19 の感染拡大を抑えるために、東京では2月以降、都県を跨いだ移動の抑制や緊急事態宣言の発令など、様々な政策が実行されてきましたが、これらの政策は、経済へ膨大なダメージを与えることから、どの程度人々の接触を抑制すべきかを明らかにすることが政策決定上非常に重要な課題となっていました。一方で、先行研究では特定の地域での人出を携帯電話の位置情報から推定するような調査は行われていましたが、そこから人々の接触を定量化した研究はありませんでした。</p> <p><手法></p> <p>ヤフー株式会社がユーザー同意のもと取得した人々の携帯電話(スマートフォン)の位置情報を解析することで、時々刻々の都市全体での接触率を算出しました。時々刻々の「接触数」は、100メートルの距離圏内に30分以上滞在したユーザー数の平均値と定義し、時々刻々の「接触率」はコロナ禍以前の1月平日の平均値に対する割合と定義しました。時空間的なパラメータを変更して解析も行い、推定結果の頑健性も確認されました。東京都において発生した日々の新規感染者数から COVID-19 の実効再生産数も推定し、これらの関係性を調査しました。</p> <p><結果></p> <p>緊急事態宣言が発令される前の3月初週時点で人々の自宅外での接触率は平時の6割程度に減少し、緊急事態宣言を発令したことで4月中旬での接触率は平時の2割程度まで抑えられていたことが示されました。また、接触率の減少には東京都内で地域差があり、平均所得の低い地域では高所得地域に比べて接触減少率が低かったことも明らかにされました。さらには、接触減少率が高いほど実効再生産数も抑えられますが、接触減少率が70%程度以上の場合、実効再生産数の抑制も限定的であることが示唆されました。</p> <p>‘携帯電話の位置情報を用いたコロナ禍での行動変容の解析’. 大阪市立大学. https://www.osaka-cu.ac.jp/ja/news/2020/201029. (参照 2020-10-29)</p>

Yabe, T., Tsubouchi, K., Fujiwara, N. et al. Non-compulsory measures sufficiently reduced human mobility in Tokyo during the COVID-19 epidemic. *Scientific Reports*. 10, 18053 (2020). doi:10.1038/s41598-020-75033-5



OPEN

Non-compulsory measures sufficiently reduced human mobility in Tokyo during the COVID-19 epidemic

Takahiro Yabe¹, Kota Tsubouchi², Naoya Fujiwara^{3,4,5}, Takayuki Wada⁶, Yoshihide Sekimoto⁴ & Satish V. Ukkusuri¹✉

While large scale mobility data has become a popular tool to monitor the mobility patterns during the COVID-19 pandemic, the impacts of non-compulsory measures in Tokyo, Japan on human mobility patterns has been under-studied. Here, we analyze the temporal changes in human mobility behavior, social contact rates, and their correlations with the transmissibility of COVID-19, using mobility data collected from more than 200K anonymized mobile phone users in Tokyo. The analysis concludes that by April 15th (1 week into state of emergency), human mobility behavior decreased by around 50%, resulting in a 70% reduction of social contacts in Tokyo, showing the strong relationships with non-compulsory measures. Furthermore, the reduction in data-driven human mobility metrics showed correlation with the decrease in estimated effective reproduction number of COVID-19 in Tokyo. Such empirical insights could inform policy makers on deciding sufficient levels of mobility reduction to contain the disease.

The COVID-19 pandemic has posed unprecedented challenges for cities around the globe¹. Countries have tackled this challenge with a variety of non-pharmaceutical interventions (NPIs), ranging from complete regional lockdowns, closures of non-essential businesses, to testing and tracing². In order to monitor, analyze and evaluate the impacts of such interventions, large scale mobile phone data has been identified as an effective data source³. Previous studies on human mobility analysis have shown that such large-scale mobility data collected from mobile devices (e.g. GPS, call detail records) may be used to assist the modeling of epidemic spread^{4–7}. During the current COVID-19 crisis, researchers from academia, industry, and government agencies have started to utilize large-scale mobility datasets to estimate the effectiveness of control measures in various countries including China, Germany, France, Italy, Spain, Sweden, United Kingdom and the United States^{8–18}.

Several studies have been conducted to analyze the mobility patterns in Japan during the state of emergency due to COVID-19¹⁹. Moreover, private companies such as Agoop²⁰ and NTT Docomo²¹ have visualized changes in population distributions during the spread of COVID-19 using mobile phone data. However, we lack studies that attempt to analyze the mobility behavioral changes in Japan and to further understand its correlation with the spread of COVID-19. Japan, in particular, has experienced a low number of cases and deaths due to COVID-19 in comparison to other countries in Europe and America, despite the social and physical proximity to China and intervention policies that are not as aggressive as some of the other countries^{22,23}. NPIs implemented by the Japanese government include non-mandatory closures and remote-working of non-essential business employees (February 26th), closures of public elementary, junior high and high schools (March 2nd), and incremental inbound entry restrictions, starting with personnel who have visited Hubei Province, China (February 3rd), until restricting inbound visitors from 73 countries (April 3rd). In the case of Japan, the current justice system does not allow the government to lay out a mandatory lockdown. Such differences in policies and COVID-19 spread dynamics make Japan an interesting case study for international comparative analysis. The objective of this paper is to provide empirical analysis on the effects of such non-compulsory NPIs on changes in (1) individual human mobility behavior and (2) amount of social contacts, and to (3) analyze the correlations between such mobility

¹Lyles School of Civil Engineering, Purdue University, West Lafayette, IN, USA. ²Yahoo Japan Corporation, Tokyo, Japan. ³Graduate School of Information Sciences, Tohoku University, Sendai, Japan. ⁴Institute of Industrial Science, The University of Tokyo, Tokyo, Japan. ⁵Center for Spatial Information Science, The University of Tokyo, Kashiwa, Japan. ⁶Graduate School of Human Life Science, Osaka City University, Osaka, Japan. ✉email: sukkusuri@purdue.edu

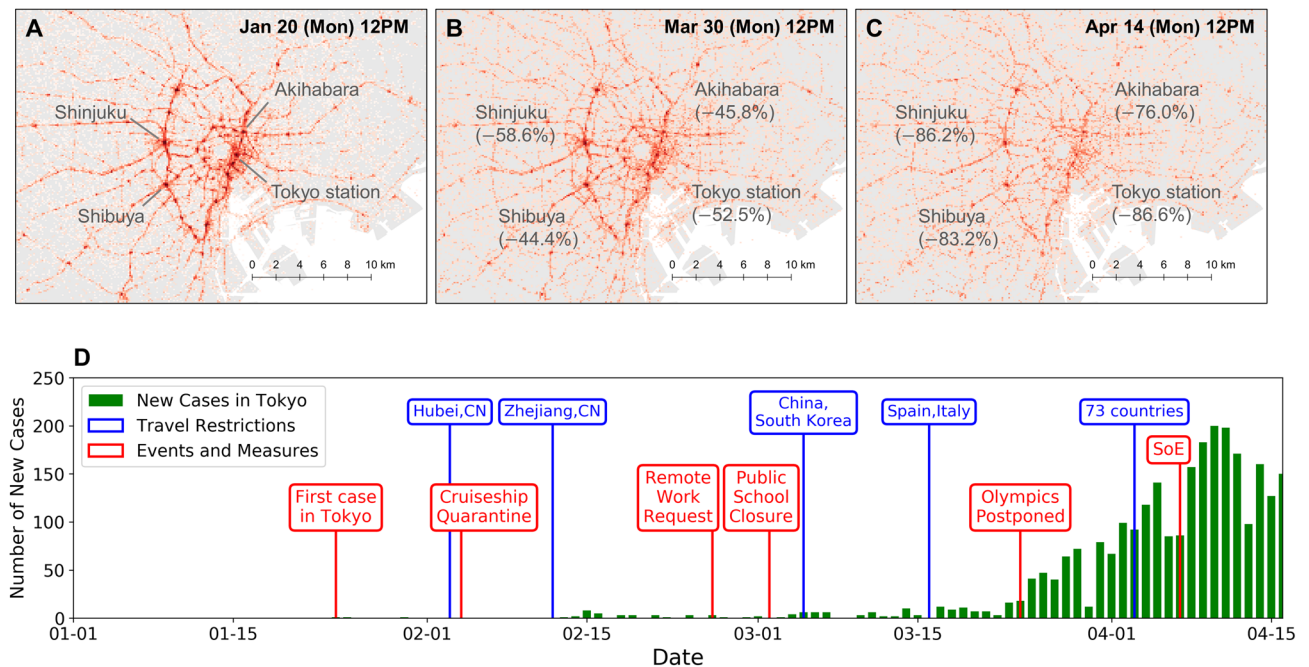


Figure 1. Macroscopic mobility dynamics. (A–C) show the population distributions on three different dates at same times (12 p.m.), each on the same day of week (Mondays). Substantial decrease in the population density at stations and cities along the Yamanote-line (ring railway) can be observed. (D) shows the timeline of the COVID-19 response and occurrence of new cases in Tokyo. Green bars show the number of cases for each day, blue annotations show inbound travel restrictions, and red annotations list related events and the policy interventions by the Japanese Government.

changes and transmissibility of COVID-19. In this study, large-scale mobility data collected from more than 200K mobile phones across a four month period in Tokyo are used to answer the aforementioned research questions.

Results

Macroscopic mobility dynamics and timeline. Panels A–C in Fig. 1 show the daytime population distributions on three different dates at same times (12 p.m.), each on the same day of week (Mondays) in Tokyo, Japan. Mobile phone data were interpolated to produce movement trajectories, and the locations of the users on each day were spatially aggregated into 100 m grid cells. The population density was corrected by dividing the observed population in each grid cell by the total number of observed users on each day, as the number of active users had daily fluctuations. As shown in previous studies²⁴, we observe high population density along the railway lines and hub stations during the daytime. Comparing the three panels, we observe substantial decrease in population density at stations and cities along the Yamanote-line (ring railway), such as Shibuya, Shinjuku, Akihabara, and Tokyo Stations. By April 14th, which was 1 week after the declaration of state of emergency, these hub stations had a 76–87% decrease in visits compared to the baseline, which was computed by taking the average population density of weekdays at the same times before the crisis (January 2020).

Figure 1D shows the timeline of the COVID-19 response and occurrence of cases in Tokyo Metropolis. Green bars show the number of cases for each day, blue annotations show inbound travel restrictions, and red annotations list the policy interventions by the Japanese Government. The number of cases for each day were obtained from the Tokyo Metropolitan Government website²⁵. Major non-pharmaceutical measures taken by the government include issuing non compulsory requests for remote working to private companies on February 26th, and closing public schools (elementary, junior high, and high schools) from March 2nd until the end of the semester, which is usually the end of March²⁶. The 2020 Olympic Games were postponed for a year on March 24th, and the State of Emergency (SoE) was declared on April 7th. Entry restrictions for inbound travellers were gradually reinforced, with the first restriction on February 3rd from Hubei Province, China. The restrictions were expanded to all foreign nationals who visited China or South Korea during the past 14 days on March 5th, and to 73 countries including the United States on April 3rd.

Changes in human mobility behavior. Here, we evaluate how individual users' mobility behavior has changed before and after the state of emergency in Tokyo, Japan. Figure 2 shows the transitions of various metrics of individual mobility patterns. Panels A and B in Fig. 2 show the mean and median values of the radius of gyration (RG) and total travel distance (TTD), which characterize the magnitude and extent of individual mobility behavior²⁷ (see “Materials and methods”). We observe two steps of decrease in both metrics, the first starting around the end of February and stabilizing until late March, and the second which is a more rapid decrease until April 15th. Both the mean and median values of RG and TTD have been reduced by 50% of the typical values

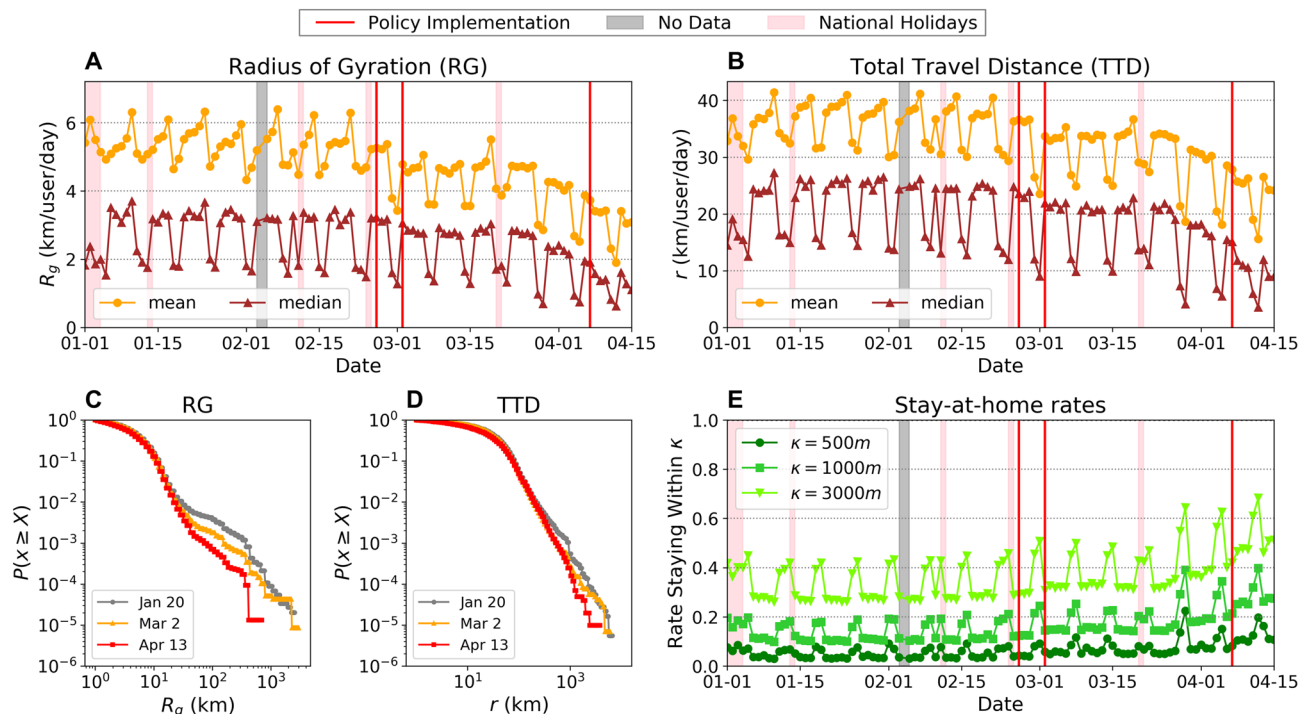


Figure 2. Changes in individual mobility patterns. Temporal transition of mean and median radius of gyration (A), total travel distance per day (B) and their complementary cumulative distribution functions (C), (D), respectively. Panel (E) shows the rate of staying κ meters within estimated home locations. Red vertical lines in panels (A, B, E) show the timings of NPIs (remote work request, public school closure, and state of emergency, respectively).

by the end of the observation period on April 15th. Panels C and D in Fig. 2 show the complementary cumulative probability distribution plots for both mobility metrics across three different dates, January 20th (before the pandemic), March 30th (before the state of emergency), and April 14th (after the state of emergency), which are all Mondays. The RG values observe a dip at around 20 km, which corresponds to the diameter of the Tokyo Metropolitan area (scale shown in Fig. 1A–C). This implies that while the majority of the individuals move within the metropolitan area, some individuals travel to different regions outside Tokyo. In both mobility metrics, we observe substantial tempering of the tail probability as time passes. This indicates a decrease in relatively long distance travelers (> 20 km for RG and > 100 km in TTD), reflecting the decrease and closures of airlines and inter-urban railways that travel outside the metropolitan Tokyo area. Figure 2E shows the rates of users staying κ meters within their estimated home locations. This figure suggests that the rate of people staying close to their estimated home locations increased since mid-March and doubled by April 15th regardless of the threshold value κ , reflecting the increase in people working from home and spending time within their neighborhoods.

Social contact analysis. Figure 3 shows the results of the social contact analysis in Tokyo over the observation period (see “Materials and methods”). The panel figures show the temporal transitions in the relative average social contact index. The contact index is calculated by tracking the number of individual users that each user is observed to be co-located in a given temporal window, using the interpolated trajectory data. We have used 100 m as the spatial threshold parameter for detecting potential co-location events in this analysis. The social contact indexes were normalized by the mean peak contact index values observed prior to the pandemic (January 2020). Thus, in Fig. 3, contact index value of 1 indicates the average amount of observed contacts during peak hours on a typical weekday prior to the pandemic. The temporal periodicity in Fig. 3 A shows the daily and weekly patterns, including the highest point showing the morning rush hour peak, the following peak showing the returning home rush hour, and substantially small amount of contacts (around 0.2) on weekends and holidays, including the New Year breaks. Panels B and C in Fig. 3 show the total daily contact index and the daily peak contact index values, respectively. By comparing the average social contacts across the time horizon, we can observe in Fig. 3 A that the average amount of social contact for each user starts to decrease as COVID-19 became a threat globally in mid February down to 90% of the typical value. The value decreases more rapidly towards the end of February with the government request for remote working, down to 65% of the typical values. The contact index stays at 65% of typical values until the end of March, and as the number of cases in Tokyo starts to increase (Fig. 1), the contact index further starts to decrease and reaches 30% of typical values by April 15th, almost reaching the government’s goal of reducing social contacts by 80% of the typical values²⁸. However, regarding the daily peak contacts (morning rush hour peaks on weekdays and lunchtime peaks on weekends and

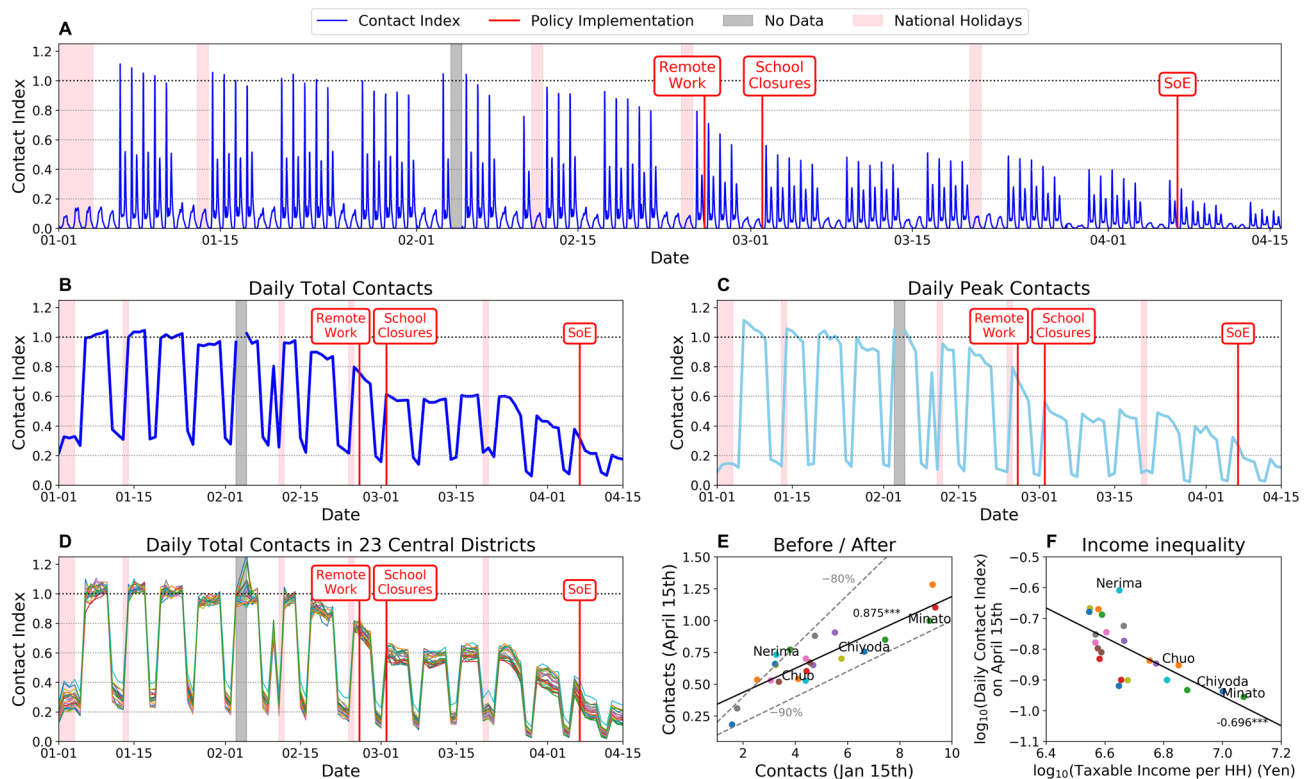


Figure 3. Social contact analysis. (A) shows the amount of contacts an individual potentially encounters outside home for each time period. (B,C) show the individuals' mean total daily contacts and the mean daily peak contacts, respectively. (D) Daily total contacts in the 23 central districts (wards) in Tokyo Metropolitan Area. (E) Correlation between non-normalized social contacts before and after the COVID-19 spread. (F) Correlation between average taxable income per household and daily contact index on April 15th.

holidays), Panel C shows that peak time social contacts have decreased successfully to around 20% of the typical values by April 15th.

Moreover, the inequality in mobility changes across different spatial regions within Metropolitan Tokyo were tested, since it has been suggested that inequality in society could aggravate the spread of COVID-19²⁹. Panel D of Fig. 3 shows the transition of daily total contacts for users with home locations in the 23 wards in central Tokyo. Although the social contact index of the regions follow similar general patterns, some heterogeneity in the contact decrease can be observed. Panel E shows strong correlation (Pearson's correlation coefficient $R = 0.875^{***}$) between the non-normalized amount of contacts on January 15th (before the pandemic) and April 15th, which is after the pandemic. Most of the 23 regions were successful in reducing the social contact index by 80% (shown by gray dashed line), except for wards including Nerima Ward. Panel F further shows the log-log plot between the relative contact index on April 15th and average taxable income per household for each ward in Tokyo. The average taxable income per household was calculated using data provided by the Official Statistics of Japan through the Portal Site³⁰. We observe strong negative correlation ($R = -0.696^{***}$) between taxable income per household and contact index, indicating that households in higher income regions were able to reduce the amount of social contacts and risk of COVID-19 transmission more than households in lower income regions. This highlights an inequality across households in terms of the voluntary mobility restrictions. Higher income households are more likely able to reduce their social contacts by reducing mobility, however lower income households may not have this flexibility. This inequality has substantial implications in terms of disease spread and will require a holistic policy planning.

Correlation of mobility indexes with effective reproduction number $R(t)$. To understand the implications of mobility behavior change and decrease in social contacts on the transmissibility of COVID-19 in Tokyo, we compare the quantified mobility behavior changes with the estimated effective reproduction number $R(t)$ of Tokyo. The $R(t)$ values were estimated using the weekly averaged number of confirmed COVID-19 cases in Tokyo, reported by the metropolitan government (see "Materials and methods"). Figure 4 shows the weekly moving averaged values of (A) social contact index, (B) radius of gyration, and (C) stay-at-home rates plotted along with the dynamic $R(t)$ values. The gray shaded areas show the 95% confidence interval for the estimated $R(t)$. Panels D–F in Fig. 4 show the temporal evolution of the mobility metrics and $R(t)$, where each dot corresponds to daily values. The vertical error bars show the 95% confidence interval of the estimated $R(t)$ values. A non-linear relationship between the mobility metrics and transmissibility are observed, where the $R(t)$ values substantially decrease around a threshold value of 0.33 in the contact index. We observe that $R(t) < 1$ is achieved

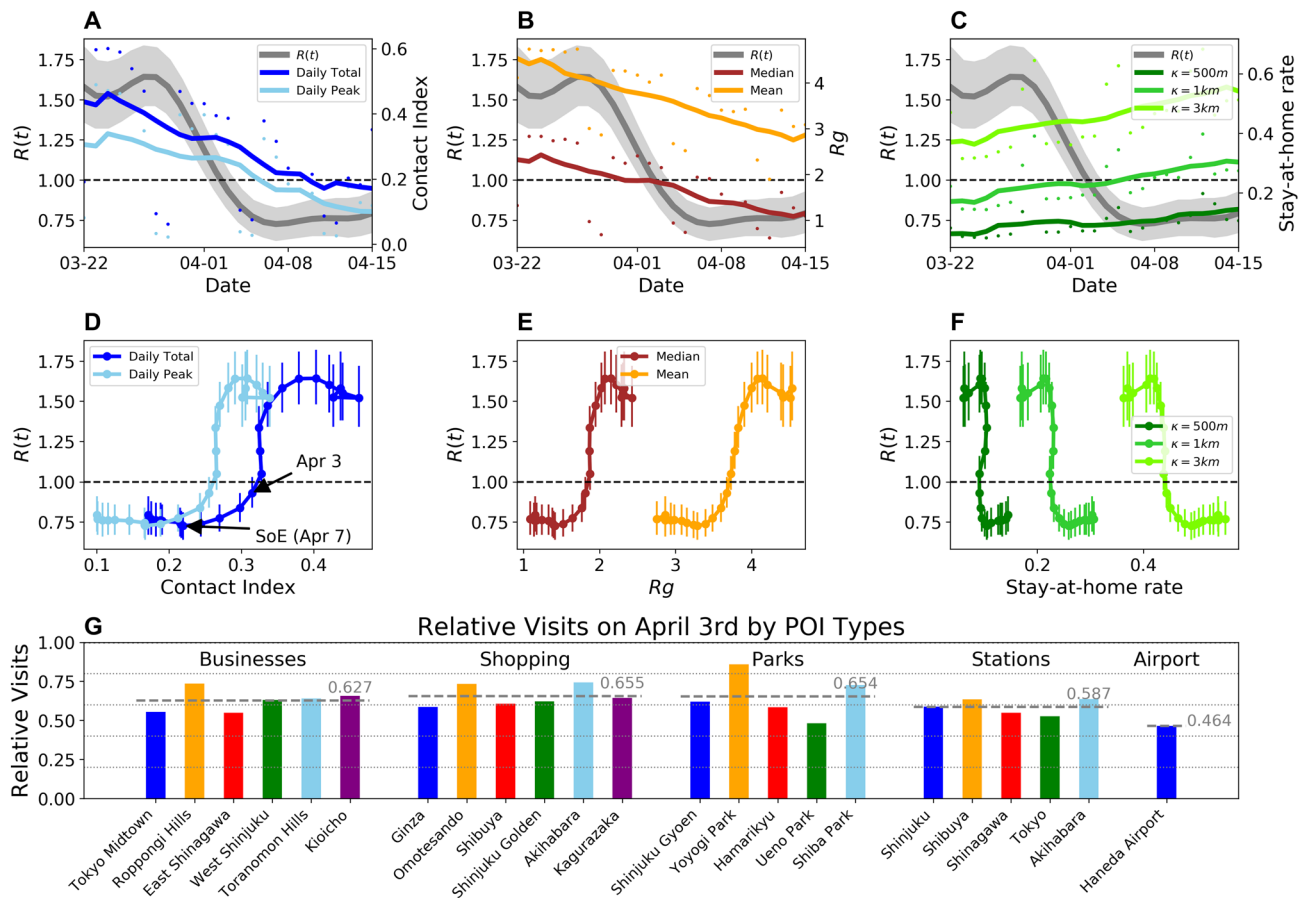


Figure 4. Correlation between mobility behavior changes and effective reproduction number $R(t)$. (A–C) shows the human mobility metrics along with the $R(t)$ values in Japan estimated by the health ministry panel on coronavirus infection cluster under the Japanese Government. (D–F) shows the relationships between the mobility metrics and $R(t)$. All panels show that $R(t)$ falls under 1.0 with reduction in mobility and social contacts, and that such reduction may have been excessive in containing the spread of COVID-19. (G) Relative amount of visits to various point of interests on April 3rd, when sufficient reduction in transmissibility was achieved in Tokyo.

with reduction in social contacts down to 0.33 on April 3rd. Further reduction in mobility and social contacts are observed after the declaration of the SoE on April 7th, but $R(t)$ had reached a bottom before the declaration. This suggests that restrictions on mobility certainly allow the reduction of number of transmissions up to a point, but further severe restrictions could have less effects on transmissibility reduction. A more targeted and nuanced approach may be needed to determine where and when mobility restrictions should be imposed.

To provide some examples of such nuanced and directly observable metrics of mobility reductions, Panel G shows the relative amount of visits to various types of points of interest (POIs) on April 3rd, which was when sufficient decrease in mobility was observed. We can observe that for all listed types of POIs (Table S2) including business districts (e.g. Tokyo Midtown, Roppongi Hills), shopping areas (e.g. Ginza, Omotesando), and major stations (e.g. Shinjuku, Shibuya), visits were reduced by around 35–40% on average compared to January weekdays (before the pandemic). Haneda Airport (major airport in Tokyo area) on the other hand, had larger decrease in visits (55%) due to travel restrictions which were imposed in early February and March (Figure S7).

Discussion

Large-scale mobility data collected from mobile phones provide us with an opportunity to monitor and understand the impacts of NPIs during the COVID-19 pandemic with an unprecedented spatio-temporal granularity and scale. In this study, we utilized such data to quantify the changes in human mobility behavior and social contacts during the COVID-19 spread in Tokyo, Japan, which provides a unique case study where government policies were limited to non-compulsory measures. The analysis concludes that by April 15th (1 week from declaring state of emergency), human mobility behavior have decreased by around 50% both in terms of radius of gyration and total travel distance per user, and also that social contact index in Tokyo had been reduced by more than 70% both in terms of daily total contacts and daily peak time contacts following non-compulsory measures including remote working requests to businesses and closures of public schools. The analysis results also showed that mobility reduction had already taken place before late March (around 40% decrease of social contacts), when the number of imported cases of COVID-19 started to increase. This indicates that even before the actual spread

of COVID-19 in Tokyo, and even under only non-compulsory measures, a substantial amount of cooperation was provided by the citizens to contain the spread of COVID-19. By comparing the mobility analysis results with the effective reproduction number $R(t)$ estimated from the daily confirmed number of cases in Tokyo, we were further able to show correlation between the mobility reduction and decrease in transmissibility of COVID-19. During late March, $R(t)$ rose above 1 and the number of cases increased, however, mobility reduced following the nation-wide state of emergency, and the $R(t)$ dropped below 1 by the beginning of April. In fact, it was found that reduction of mobility and social contacts beyond certain thresholds (e.g. social contact index of 0.33) had little incremental effects on the decrease in $R(t)$. Looking forward into lifting the state of emergency declaration, these results could inform decision making on how much human mobility and social contact reduction is needed to keep the effective reproduction number of COVID-19 below 1. Figure 4G provides more directly observable measures of mobility reduction at various points of interest which can be used to interpret the sufficient amount of social contact reduction to contain COVID-19.

The presented empirical results should be considered in the light of some limitations. First, the presented analysis was limited to understanding the correlations between mobility and contact reduction and transmissibility. However, microscopic human behavior, such as sanitizing hands more often or higher rates of wearing face masks, could have affected the reduction in transmissibility. Because of such factors other than human mobility, the relationships between mobility reductions and transmissibility could change after lifting the state of emergency. Due to the lack of data on $R(t)$ under no interventions, it is not certain whether the $R(t)$ values reach a similar value of that in European countries and the US. Additional household surveys and interviews need to be conducted to quantify the effects of such behavioral changes. Second, GPS location data collected from mobile phones are prone to spatial errors up to 100 m. This spatial error could have biased the results of the mobility metrics. However, sensitivity analysis suggests that the conclusions are not affected by the spatial thresholds selected in this study (Figures S3, S4). In addition to the 2% sample rate, the granularity of the data was not adequate to compute the actual contacts between individuals (i.e. 2 m distance for all individuals). Moreover, it is known that mobile phone data contain biases in age and income groups^{31,32}. It is important to analyze the mobility of the more vulnerable and elderly population due to the high mortality rate of COVID-19. Although similar conclusions were reached when different spatial thresholds were used via sensitivity analysis, additional validation using small scale but precise data could further clarify the approximate social contact measure computed in this study using mobile phone data. Third, in Tokyo, data on the daily number of new onset cases were not available. Thus, we estimated the onset timings from the daily number of confirmed cases, by shifting the data back 7 days, following reports from Huang et al.³³. Starnini et al.³⁴ has shown that the estimation accuracy of $R(t)$ could suffer by using the daily number of confirmed cases. However, this effect is more substantial in the early dynamics of the epidemic, and less towards later periods where our analysis is focused on.

Future research steps include extending the analysis to other cities in Japan such as Sapporo and Osaka, where different patterns of COVID-19 spread have been observed (Figure S1). Cross-comparative analysis including multiple regions could yield novel and more generalizable insights on the relationships between mobility pattern changes and COVID-19 transmissibility. In addition to the spatial dimension, extending the time period of analysis after April 15th and analyzing the dynamics after the lifting of the interventions could strengthen our understanding between social contact decrease and transmissibility reduction. Although this study used aggregated measures to quantify the behavioral changes (e.g. average social contacts), more microscopic analysis of mobility changes could be conducted with additional data.

Materials and methods

Mobile phone location data. Location data of smartphones were collected by Yahoo Japan Corporation through the disaster alert app in order to send relevant notifications and information to the users. The users in this study have accepted to provide their location information. The data are anonymized so that individuals cannot be specified, and personal information such as gender, age and occupation are unknown. Each GPS record consists of a user's unique ID (random character string), timestamp, longitude, and latitude. The data acquisition frequency of GPS locations changes according to the movement speed of the user to minimize the burden on the user's smartphone battery. If it is determined that the user is staying in a certain place for a long time, data is acquired at a relatively low frequency, and if it is determined that the user is moving, the data is acquired more frequently. The data has a sample rate of approximately 2% of the population, and past studies suggest that this sample rate is enough to understand the macroscopic urban dynamics, even during an emergency³⁵. We selected a panel of users who were active each day in Tokyo metropolitan area before, during and after the COVID-19 pandemic. This leads to a sample of about 200k users, with approximately 50 data points per user each day (Figure S2). Home locations of each individual was detected by applying mean-shift clustering to the nighttime staypoints (observed between 8 p.m. and 6 a.m.), weighted by the duration of stays in each location³⁶.

Socio-economic data. Socio-economic data of 23 wards in Tokyo Metropolis were obtained from the Portal Site of Official Statistics of Japan³⁰. The number of households and total taxable income collected from the residents were available through the Portal Site. The taxable income per household values used in the analysis in Fig. 3F were calculated by dividing the total taxable income by the number of households in each region (ward) (Figure S5, Table S1).

Effective reproduction number $R(t)$. The effective reproduction number $R(t)$ is commonly used to quantify transmissibility of an infectious disease, which is defined as the average number of secondary cases generated by a single infectious case³⁷. Effects of NPIs such as social distancing can be measured by the effective reproduction number. In order to estimate $R(t)$ of COVID-19 in Tokyo, we employed time series data of daily

confirmed COVID-19 cases in Tokyo reported by Tokyo metropolitan government²⁵. Since the data of the onset cases are unavailable, we used the confirmed date for the estimation. The original daily data were smoothed by taking the centered 7-day moving average. Estimation of $R(t)$ is conducted based on the code implemented by Jung et al., which is available on the Github repository³⁸. The code estimates $R(t)$ using the following steps. Since our data on the number of infected cases is based on the laboratory confirmation, there is a time lag associated with the date of infection. The date of the onset of symptoms is estimated by shifting the confirmed daily number of new cases backwards in time for 7 days to account for the diagnosis delay, based on the report by Huang et al.³³ that the median number of days from onset to first hospital admission was 7.0 days. Furthermore, to estimate the daily number of infections, the daily number of onset cases was back-projected using a lognormal density function with mean of 5.6 days and standard deviation of 2.8 days³⁹. $R(t)$ was estimated via the renewal equation⁴⁰, which uses the time series of the number of new infected cases in Tokyo on day t , $C(t)$. The expected number of infected cases $E[C(t)]$ are modeled as:

$$E[C(t)] = R(t) \sum_{\tau=1}^{t-1} C(t-\tau)g(\tau) \frac{F(T-t)}{F(T-t+\tau)}, \quad (1)$$

where $E[x]$ denotes the expectation of random variable x , and T is the latest day of observation. The Weibull distribution with shape factor 2.305 and the scale factor 5.452 was assumed to be the probability density function of the generation interval $g(\tau)$ ⁴¹. Moreover, the cumulative Weibull distribution $F(t)$ with shape factor 1.741 and scale factor 8.573, based on the maximum likelihood estimation using data on the reporting date and the date of illness onset collected by the Ministry of Health, Labor and Welfare of Japan³⁸, was introduced to account for the right-truncated reporting delay from illness onset to laboratory confirmation. It was assumed that $C(t)$ follows a Poisson distribution, and $R(t)$ was estimated by maximizing the following likelihood function:

$$L(R(t); C(t)) = \prod_{t=1}^T \frac{\exp\{-E[C(t)]\}E[C(t)]^{C(t)}}{C(t)!}. \quad (2)$$

The 95% confidence interval of each estimate was also derived using the likelihood function.

Individual mobility indexes. Several indexes have been used in previous studies to characterize individual human mobility patterns^{27,32}. In this study, we use three key indexes: Radius of Gyration (R_g), total travel distance (TTD), and stay-at-home rates parameterized by a spatial threshold κ (SAH_κ). Given a sequence of GPS observation points $P_i = \{p_i^1, p_i^2, \dots, p_i^N\}$ in a single day of an individual user i , the radius of gyration is calculated using the following equation.

$$R_g = \sqrt{\frac{1}{N} \sum_{n=1}^N (p_i^n - \bar{p}_i)^2}, \quad (3)$$

where \bar{p}_i denotes the center of mass of the GPS observation points of user i . The total travel distance of an individual user is the sum of Euclidean distances between all subsequent pairs of GPS observation points on a given day. The stay-at-home rate, parameterized by a spatial threshold κ , is the rate of individual users who had stayed the entire day within a distance κ from the estimated home location.

Quantifying social contact index from trajectory data. To overcome data sparsity, spatio-temporal interpolation of the GPS location observations were performed. Because the GPS data are collected less frequently when movement is detected, we assume that the individual users are static while there are no observations. Using the interpolated individual trajectory data produced from mobile phones, the social contact indexes were computed. The social contact indexes shown in Fig. 3 were computed for 30 min intervals. First, for each time interval $[t, t + dt)$, where $dt = 30$ min, users who were not within 100 m from their estimated home locations were detected as “staying out”. We denote this set of individual users as N_t^{out} . For user i staying out ($i \in N_t^{\text{out}}$), we compute the number of other “staying out” users who are within 100 m from user i , and use that count $c_{i,t}$ as a proxy for social contacts. The social contact index is calculated as the total social contacts for all users staying out, divided by the total number of users including those staying at their homes. Thus, mean social contact value is computed as $C_t = \sum_{i \in N_t^{\text{out}}} c_{i,t} / N$, where N is the total number of users observed on that day. The social contact index is the relative value of mean social contacts with respect to typical mobility patterns, observed before the COVID-19 pandemic. The typical mean social contact value is computed by taking the average of daily peak social contact values observed on weekdays in January 2020. Thus, the social contact index (SCI) of 1 corresponds to the same amount of social contacts as the daily peak times on weekdays before the COVID-19 pandemic.

Received: 9 July 2020; Accepted: 6 October 2020

Published online: 22 October 2020

References

1. Anderson, R. M., Heesterbeek, H., Klinkenberg, D. & Hollingsworth, T. D. How will country-based mitigation measures influence the course of the COVID-19 epidemic? *Lancet* **395**, 931–934 (2020).
2. Flaxman, S. *et al.* Estimating the number of infections and the impact of non-pharmaceutical interventions on COVID-19 in European countries: Technical description update. arXiv preprint [arXiv:2004.11342](https://arxiv.org/abs/2004.11342) (2020).
3. Oliver, N. *et al.* Mobile phone data for informing public health actions across the COVID-19 pandemic life cycle. *Sci. Adv.* **6**(23), eabc0764 (2020).
4. Bengtsson, L. *et al.* Using mobile phone data to predict the spatial spread of cholera. *Sci. Rep.* **5**, 8923 (2015).
5. Finger, F. *et al.* Mobile phone data highlights the role of mass gatherings in the spreading of cholera outbreaks. *Proc. Natl. Acad. Sci.* **113**, 6421–6426 (2016).
6. Tizzoni, M. *et al.* On the use of human mobility proxies for modeling epidemics. *PLoS Computat. Biol.* **10**(7), e1003716 (2014).
7. Wesolowski, A. *et al.* Quantifying the impact of human mobility on malaria. *Science* **338**, 267–270 (2012).
8. Klein, B. *et al.* Assessing changes in commuting and individual mobility in major metropolitan areas in the united states during the COVID-19 outbreak. Northeastern University, Network Science Institute. <https://www.networkscienceinstitute.org/publications/assessing-changes-in-commuting-and-individual-mobility-in-major-metropolitan-areas-in-the-united-states-during-the-covid-19-outbreak>. (Accessed 26 June 2020).
9. Kraemer, M. U. *et al.* The effect of human mobility and control measures on the COVID-19 epidemic in China. *Science* **368**, 493–497 (2020).
10. Lai, S. *et al.* Effect of non-pharmaceutical interventions for containing the COVID-19 outbreak in China. *medRxiv*. <https://doi.org/10.1101/2020.03.03.20029843> (2020).
11. Pepe, E. *et al.* Covid-19 outbreak response: A first assessment of mobility changes in Italy following national lockdown. *medRxiv*. <https://doi.org/10.1101/2020.03.22.20039933> (2020).
12. Bonato, P. *et al.* Mobile phone data analytics against the COVID-19 epidemics in Italy: Flow diversity and local job markets during the national lockdown. arXiv preprint [arXiv:2004.11278](https://arxiv.org/abs/2004.11278) (2020).
13. Wellenius, G. A. *et al.* Impacts of state-level policies on social distancing in the United States using aggregated mobility data during the COVID-19 pandemic. arXiv preprint [arXiv:2004.10172](https://arxiv.org/abs/2004.10172) (2020).
14. Gao, S., Rao, J., Kang, Y., Liang, Y. & Kruse, J. Mapping county-level mobility pattern changes in the united states in response to COVID-19. *Available SSRN 3570145*, (2020).
15. Dahlberg, M. *et al.* Effects of the COVID-19 pandemic on population mobility under mild policies: Causal evidence from Sweden. arXiv preprint [arXiv:2004.09087](https://arxiv.org/abs/2004.09087) (2020).
16. Santana, C. *et al.* Analysis of human mobility in the UK during the COVID-19 pandemic. <https://covid19-uk-mobility.github.io/>. (Accessed 26 June 2020) (published April 8, 2020).
17. Cintia, P. *et al.* The relationship between human mobility and viral transmissibility during the COVID-19 epidemics in Italy. arXiv preprint [arXiv:2006.03141](https://arxiv.org/abs/2006.03141) (2020).
18. Schlosser, F., Maier, B. F., Hinrichs, D., Zachariae, A. & Brockmann, D. COVID-19 lockdown induces structural changes in mobility networks—Implication for mitigating disease dynamics. arXiv preprint [arXiv:2007.01583](https://arxiv.org/abs/2007.01583) (2020).
19. Mizuno, T. & Ohnishi, T. Controlling the spread of COVID-19 using human mobility big data. https://www.canon-igs.org/column/macroeconomics/20200414_6352.html. (Accessed 15 May 2020) (2020) (published April 14, 2020, in Japanese).
20. Agoop Corporation. Analysis of changes in human mobility due to spread of novel coronavirus. https://corporate-web.agoop.net/pdf/covid-19/agoop_analysis_coronavirus.pdf. (Accessed 26 June 2020) (2020).
21. NTT Docomo, Inc. Mobile spatial statistics population map. <https://mobakumap.jp/>. (Accessed 26 June 2020) (2020).
22. Dong, E., Du, H. & Gardner, L. An interactive web-based dashboard to track COVID-19 in real time. *Lancet Infect. Diseases* (2020).
23. Idogawa, M., Tange, S., Nakase, H. & Tokino, T. Interactive web-based graphs of novel coronavirus COVID-19 cases and deaths per population by country. *Clin. Infect. Diseases*. <https://doi.org/10.1093/cid/ciaa500> (2020).
24. Kashiya, T., Pang, Y. & Sekimoto, Y. Open pflow: Creation and evaluation of an open dataset for typical people mass movement in urban areas. *Transp. Res. Part C Emerg. Technol.* **85**, 249–267 (2017).
25. Tokyo Metropolitan Government. COVID-19 information website. <https://github.com/tokyo-metropolitan-gov/covid19>. (Accessed 26 June 2020) (2020).
26. Ministry of Health, Labour and Welfare, Japan. About coronavirus disease 2019 (COVID-19). https://www.mhlw.go.jp/stf/seisakunitsuite/bunya/newpage_00032.html. (Accessed 26 June 2020) (2020).
27. Gonzalez, M. C., Hidalgo, C. A. & Barabasi, A.-L. Understanding individual human mobility patterns. *Nature* **453**, 779–782 (2008).
28. The Japan Times. Japan's coronavirus total surpasses 10,000 as Tokyo adds 181 cases. <https://www.japantimes.co.jp/news/2020/04/18/national/covid-19-infections-10000/#.Xr37bGgzY1s>. (Accessed 15 May 2020) (2020) (published April 18, 2020).
29. Ahmed, F., Ahmed, N., Pissarides, C. & Stiglitz, J. Why inequality could spread COVID-19. *Lancet Public Health* **5**, e240 (2020).
30. Statistics Bureau of Japan. Portal site of official statistics of Japan. <https://www.e-stat.go.jp/en/regional-statistics/ssdsview/municipality>. (Accessed 26 June 2020) (2020).
31. Frias-Martinez, V. & Virseda, J. On the relationship between socio-economic factors and cell phone usage. *Proceedings of the Fifth International Conference on Information and Communication Technologies and Development* 76–84 (2012).
32. Blondel, V. D., Decuyper, A. & Krings, G. A survey of results on mobile phone datasets analysis. *EPJ Data Sci.* **4**, 10 (2015).
33. Huang, C. *et al.* Clinical features of patients infected with 2019 novel coronavirus in Wuhan, China. *Lancet* **395**, 497–506 (2020).
34. Starnini, M., Aleta, A., Tizzoni, M. & Moreno, Y. Impact of the accuracy of case-based surveillance data on the estimation of time-varying reproduction numbers. *medRxiv*. <https://doi.org/10.1101/2020.06.26.20140871> (2020).
35. Yabe, T., Tsubouchi, K., Fujiwara, N., Sekimoto, Y. & Ukkusuri, S. V. Understanding post-disaster population recovery patterns. *J. Royal Soc. Interface* **17**, 20190532 (2020).
36. Ashbrook, D. & Starner, T. Using GPS to learn significant locations and predict movement across multiple users. *Personal Ubiquitous Comput.* **7**, 275–286 (2003).
37. Held, L., Hens, N., O'Neill, P. D. & Wallinga, J. *Handbook of Infectious Disease Data Analysis*. (Chapman and Hall/CRC, Boca Raton, 2019).
38. Jung, S.-M. J., Akhmetzhanov, A. R., Mizumoto, K. & Nishiura, H. Real-time estimation of the effective reproduction number of COVID-19 in Japan. <https://github.com/contactmodel/COVID19-Japan-Reff>. (Accessed 15 May 2020) (2020).
39. Linton, N. M. *et al.* Incubation period and other epidemiological characteristics of 2019 novel coronavirus infections with right truncation: A statistical analysis of publicly available case data. *J. Clin. Med.* **9**, 538 (2020).
40. Diekmann, O., Heesterbeek, H. & Britton, T. *Mathematical Tools for Understanding Infectious Disease Dynamics* Vol. 7 (Princeton University Press, Princeton, 2012).
41. Nishiura, H., Linton, N. M. & Akhmetzhanov, A. R. Serial interval of novel coronavirus (covid-19) infections. *Int. J. Infect. Diseases* **93**, 284–286 (2020).

Acknowledgements

T.Y. and S.V.U. were partly funded by NSF Grant No. 1638311 CRISP Type 2/Collaborative Research: Critical Transitions in the Resilience and Recovery of Interdependent Social and Physical Networks. N.F. was supported

by JSPS KAKENHI Grant Number JP18K11462. T.W. was supported by the Osaka City University Strategic Research Grant 2020 for basic researches Kakenhi 20H03932.

Author contributions

All authors designed research; T.Y., K.T., N.F., and S.V.U. performed analysis; T.Y., K.T., and N.F. analyzed data; All authors wrote the paper.

Competing interests

The authors declare no competing interests.

Additional information

Supplementary information is available for this paper at <https://doi.org/10.1038/s41598-020-75033-5>.

Correspondence and requests for materials should be addressed to S.V.U.

Reprints and permissions information is available at www.nature.com/reprints.

Publisher's note Springer Nature remains neutral with regard to jurisdictional claims in published maps and institutional affiliations.



Open Access This article is licensed under a Creative Commons Attribution 4.0 International License, which permits use, sharing, adaptation, distribution and reproduction in any medium or format, as long as you give appropriate credit to the original author(s) and the source, provide a link to the Creative Commons licence, and indicate if changes were made. The images or other third party material in this article are included in the article's Creative Commons licence, unless indicated otherwise in a credit line to the material. If material is not included in the article's Creative Commons licence and your intended use is not permitted by statutory regulation or exceeds the permitted use, you will need to obtain permission directly from the copyright holder. To view a copy of this licence, visit <http://creativecommons.org/licenses/by/4.0/>.

© The Author(s) 2020